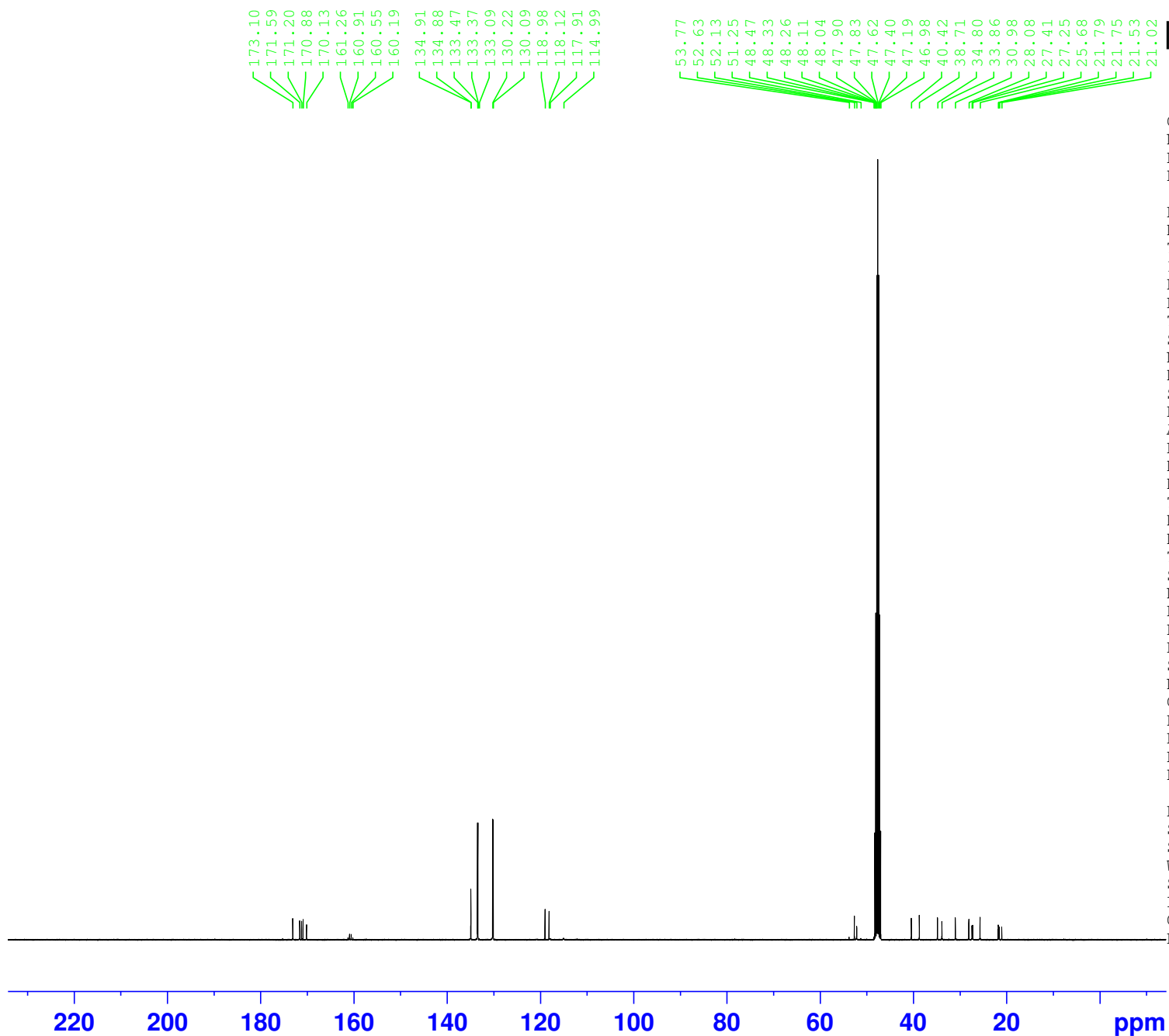


SC-15-80P



Current Data Parameters
NAME c
EXPNO 11
PROCNO 1

F2 - Acquisition Parameters
Date_ 20240415
Time 22.58 h
INSTRUM spect
PROBHD z116098_0527 (
PULPROG zgpg30
TD 119044
SOLVENT MeOD
NS 3000
DS 4
SWH 25000.000 Hz
FIDRES 0.420013 Hz
AQ 2.3808801 sec
RG 212.93
DW 20.000 usec
DE 8.06 usec
TE 298.1 K
D1 1.00000000 sec
D11 0.03000000 sec
TD0 1
SFO1 100.6489824 MHz
NUC1 13C
P0 3.26 usec
P1 9.78 usec
PLW1 80.98200226 W
SFO2 400.2316009 MHz
NUC2 1H
CPDPRG[2] waltz64
PCPD2 90.00 usec
PLW2 16.02700043 W
PLW12 0.18694000 W
PLW13 0.09402900 W

F2 - Processing parameters
SI 131072
SF 100.6379135 MHz
WDW EM
SSB 0
LB 1.00 Hz
GB 0
PC 1.40